

# MONTHLY MEMBERSHIP PROGRESS REPORT

District 23 B

Results as of: 3/31/2020

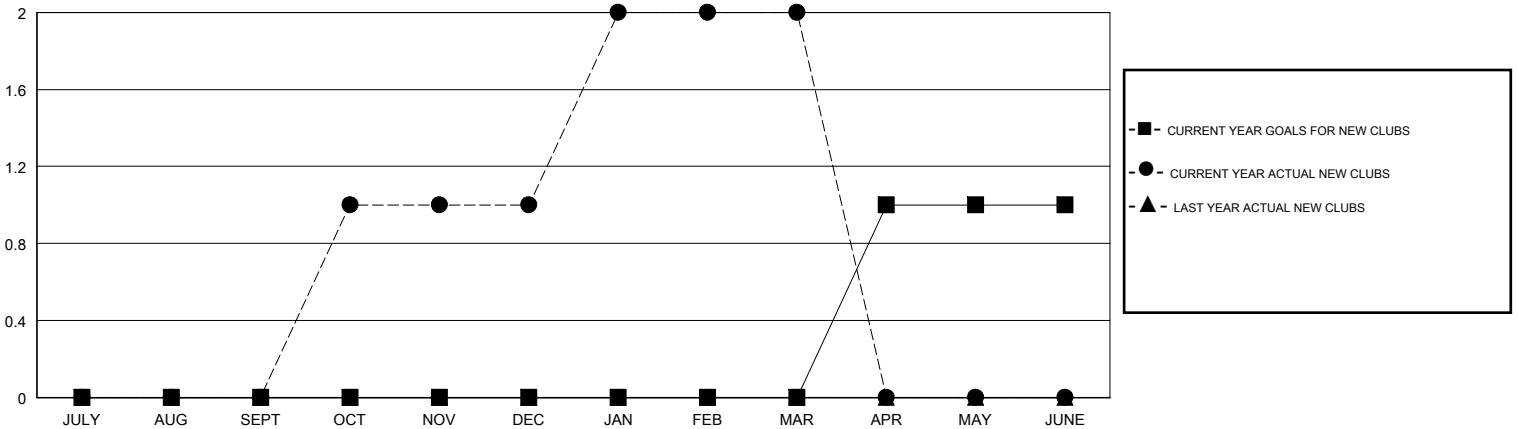
GMT:

LOCATION CONNECTICUT

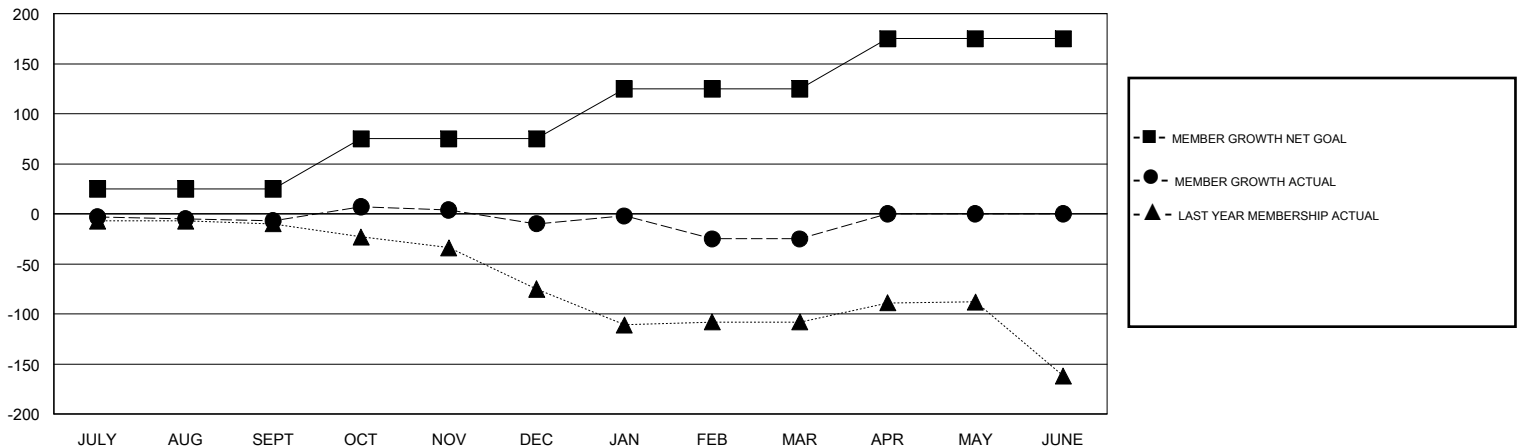
GMT CA

Clubs				Members			
RESULTS FOR 2019-2020				RESULTS FOR 2019-2020			
QUARTER	NEW CLUB GOAL	NEW CLUBS	DROPPED CLUBS	QUARTER	MEMBER GROWTH NET GOAL	MEMBER GROWTH ACTUAL	DROPPED MEMBERS ACTUAL (including transfers)
JULY/AUG/SEPT	0	0	0	JULY/AUG/SEPT	25	22	28
OCT/NOV/DEC	0	1	1	OCT/NOV/DEC	50	69	70
JAN/FEB/MAR	0	1	1	JAN/FEB/MAR	50	53	64
APR/MAY/JUNE	1	0	0	APR/MAY/JUNE	50	0	0

GOALS AND ACTUAL NEW CLUBS CUMULATIVE



GOALS AND ACTUAL MEMBERS CUMULATIVE



DROPPED CLUBS: 2	35 CLUBS OF 55 ADDED 1 OR MORE NEW MEMBERS	<u>GENDER DISTRIBUTION</u>	
DROPPED MEMBERS		MALE	1,147 (66.72%)
DECEASED	15	FEMALE	572 (33.28%)
CLUB CANCELLED	8	TOTAL FAMILY UNIT MEMBERS	
OTHER	139	350	
TOTAL	162	FAMILY MEMBERS PAYING HALF DUES	
		184	

[CLICK HERE FOR CUMULATIVE MEMBERSHIP DATA](#)